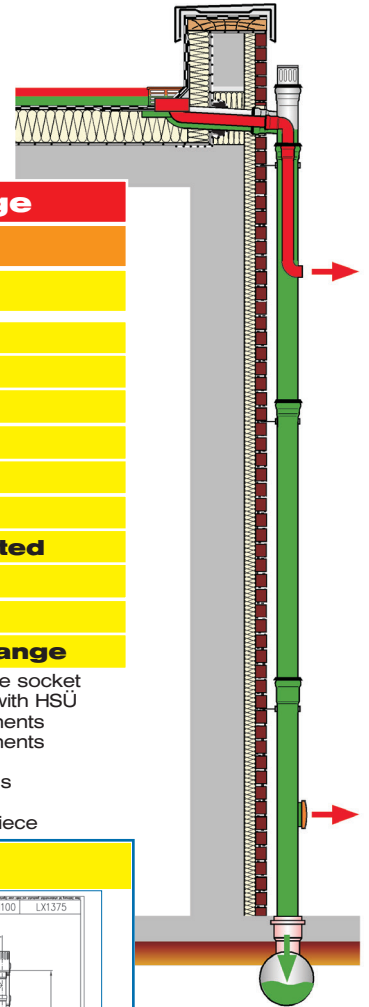


Specification sheet LX 1375

Parapet drainage

Series 43 LORO-X DUOFLUX® Pipe in pipe with siphonic spout



Main drainage	
Gravity flow	
Silent-Power	
Discharge rate:	3,6 l/sec
Water height:	35 mm
Roof penetration:	103 mm
Diameter:	DN 100
Weir height:	0 mm
Drain:	ventilated
Downpipe:	ventilated
Downpipe height:	4,2 m
Drainage:	in sewer
Flange:	Bonding flange

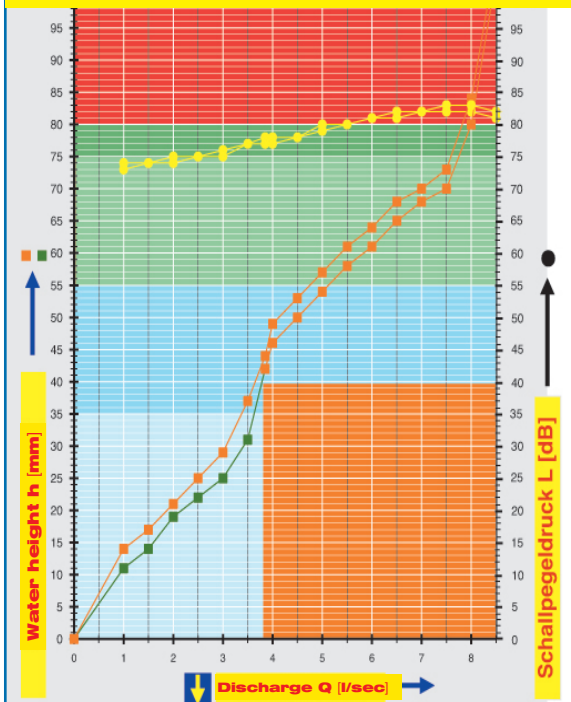
Emergency drainage	
Siphonic flow	
Silent-Power	
Discharge rates:	4,2 l/sec
Water height:	75 mm
Roof penetration:	103
Diameter:	DN 50
Weir height:	40 mm
Drain:	ventilated
Downpipe:	not ventilated
Downpipe height:	0,6 m
Drainage:	on floor
Flange:	Bonding flange

LX Piece list 1375

- 1 x Art.-No. 13508.100X, LORO-X DUOFLUX® Parapet drain
- 1 x Art.-No. 01211.100X, LORO-X Pipe with one socket
- 1 x Art.-No. 01203.050X, LORO-X Pipe with one socket
- 1 x Art.-No. 13501.100X, LORO-X Siphonic spout
- 1 x Art.-No. 13500.100X, LORO-Branch with bend
- 1 x Art.-No. 13235.100X, LORO-X Sliding flange
- 2 x Art.-No. 00806.100X, LORO-X Anchor clips

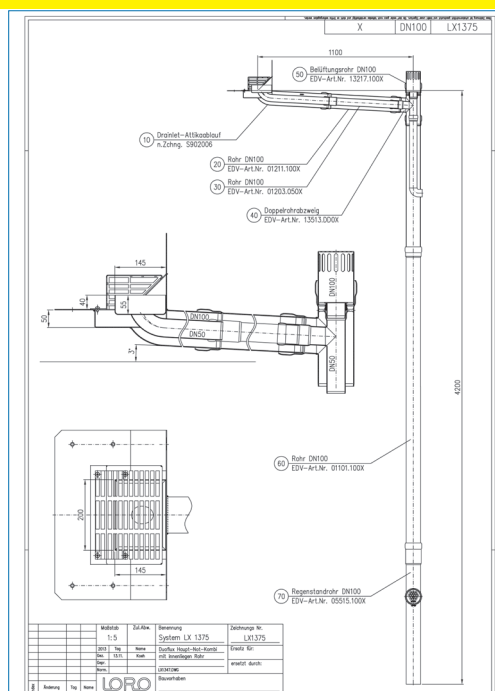
- 1 x Art.-No. 01101.100X, LORO-X Pipe with one socket
- 1 x Art.-No. 55154.100X, LORO-X Stand pipe with HSÜ
- 4 x Art.-No. 00911.100X, LORO-X Sealing elements
- 2 x Art.-No. 00911.050X, LORO-X Sealing elements
- 3 x Art.-No. 00975.100X, LORO-X Pipe clips
- 3 x Art.-No. 09604.200X, LORO-X Thread rods
- 1 x Art.-No. 00986.000X, LORO-X Lubricant
- 1 x Art.-No. 13217.100X, LORO-X Ventilation piece

hQ-dB - Head Discharge curve



Systempower

CAD



Systemshape

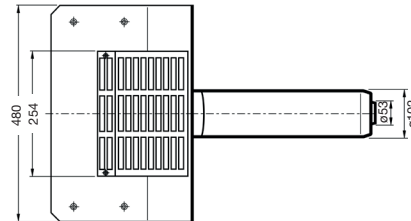
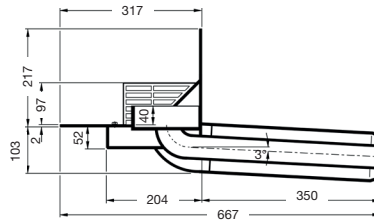
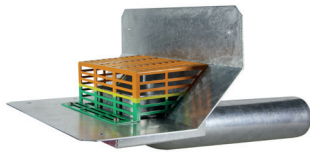
Water height	mm		10	15	20	25	30	35	40	45	50	55	60	65	70	75
Discharge normal curve	l/sec		-	1,6	2,2	3,0	3,4	3,6								
Discharge Hauptleitung zu	l/sec								3,8	4,0	4,5	5,1	5,8	6,5	7,5	7,8
Silent																

LORO-X DUOFLUX® Main emergency combination Parapet drain,

LX1375-3X

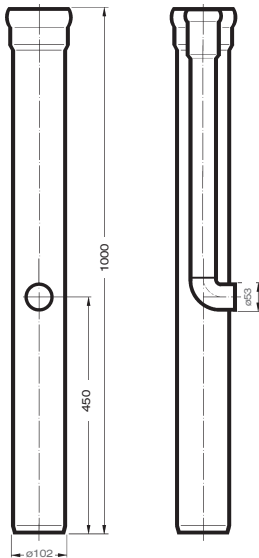
Drain: Art.-No. 13508.100X
Weight: 9,6 kg

with bonding flange
and siphonic spout
for bituminous roofing sheets



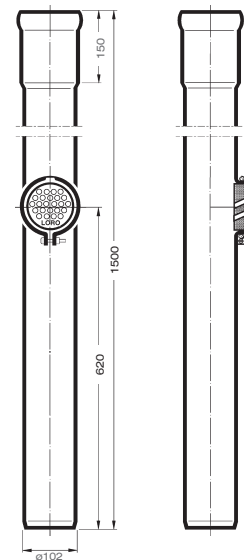
LORO-Siphonic spout
made of galvanized steel,

Art.-No. 13501.100X
Weight: 6,7 kg



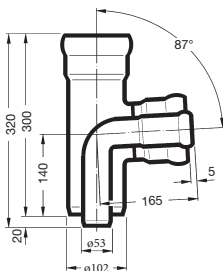
LORO-Stand pipe with High performance safety over flow
made of galvanized steel,

Art.-No. 55154.100X
Weight: 6,6 kg



LORO-Branch 87° with bend
made of galvanized steel,

Art.-No. 13500.100X
Weight: 3,1 kg



LORO-X Ventilation piece

made of galvanized steel,
Art.-No. 13217.100X
Weight: 0,7 kg



Heat tracing: LOROWERK recommends to check all drains and pipes with regard to their frost-sensibility. Where necessary, these parts should be upgraded with heat tracing.